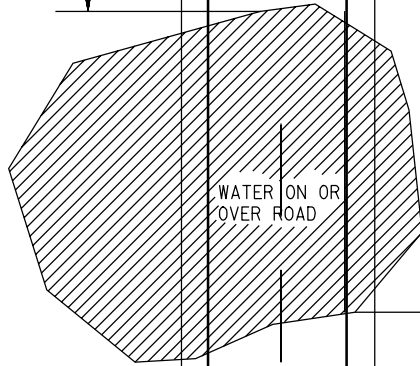


Posted Speed Prior to Work (M.P.H.)	Recommended Length of Longitudinal Buffer Space (Feet)
20	35
25	55
30	85
35	120
40	170
45	220
50	280
55	335
60	415
65	485

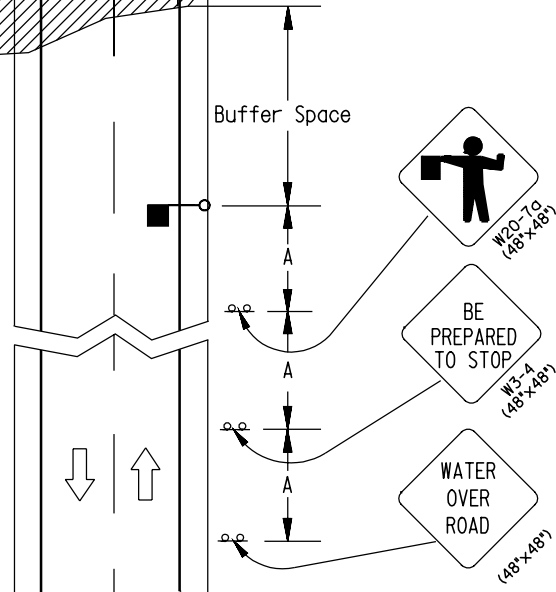
Buffer Space dependant on work site limitations.

Posted Speed Prior to Work (M.P.H.)	Spacing of Advanced Warning Signs (A)
0 - 30	100
35 - 40	350
45 - 50	500
55 - 65	750

Delineate edge of roadway with Delineators or Type II Object Markers through high water area at 200' spacing



■ - Flagger



**GUIDES FOR TRAFFIC CONTROL DEVICES  
WITH FLAGGERS  
WATER ON OR OVER ROAD**

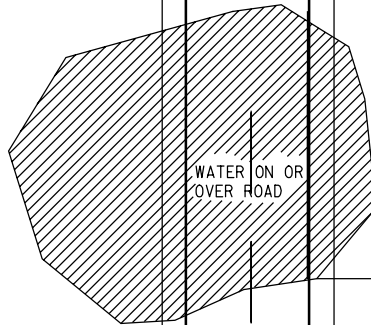
Layout is for one direction of travel  
 Warning Signs shall be yellow in color.

Speed Limit Signs shall be 30"x36"

Resume normal  
 post speed



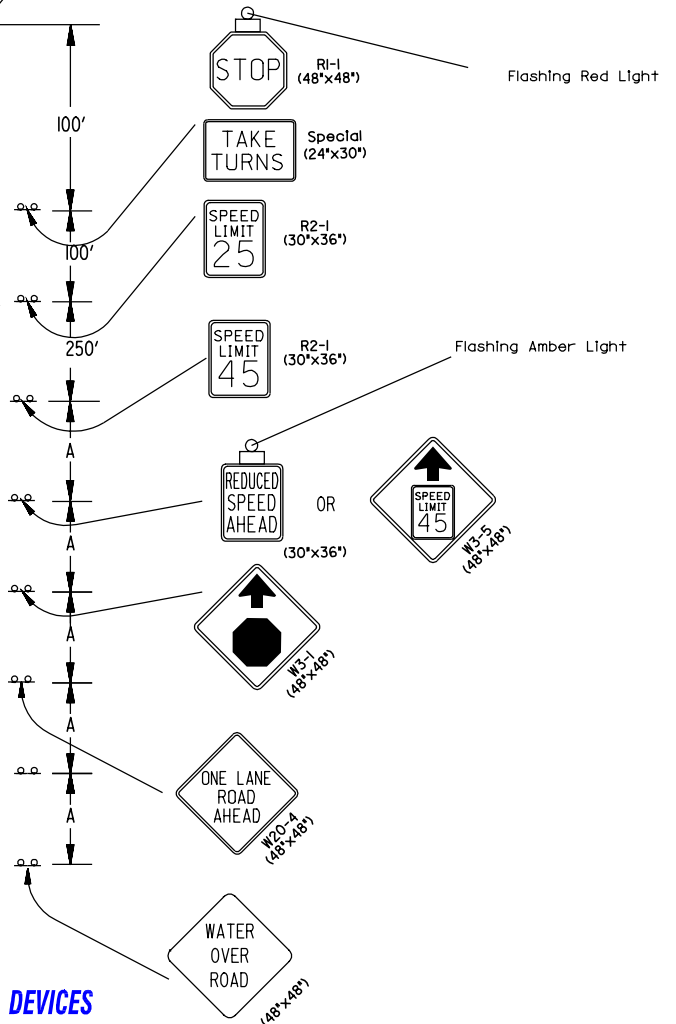
Delineate edge of roadway with  
 Type II Object Markers back to back  
 through high water area at 200' spacing



Posted Speed Prior to Work (M.P.H.)	Recommended Length of Longitudinal Buffer Space (Feet)
20	35
25	55
30	85
35	120
40	170
45	220
50	280
55	335
60	415
65	485

Buffer Space dependant on work site limitations.

Posted Speed Prior to Work (M.P.H.)	Spacing of Advanced Warning Signs (A)
0 - 30	100
35 - 40	350
45 - 50	500
55 - 65	750



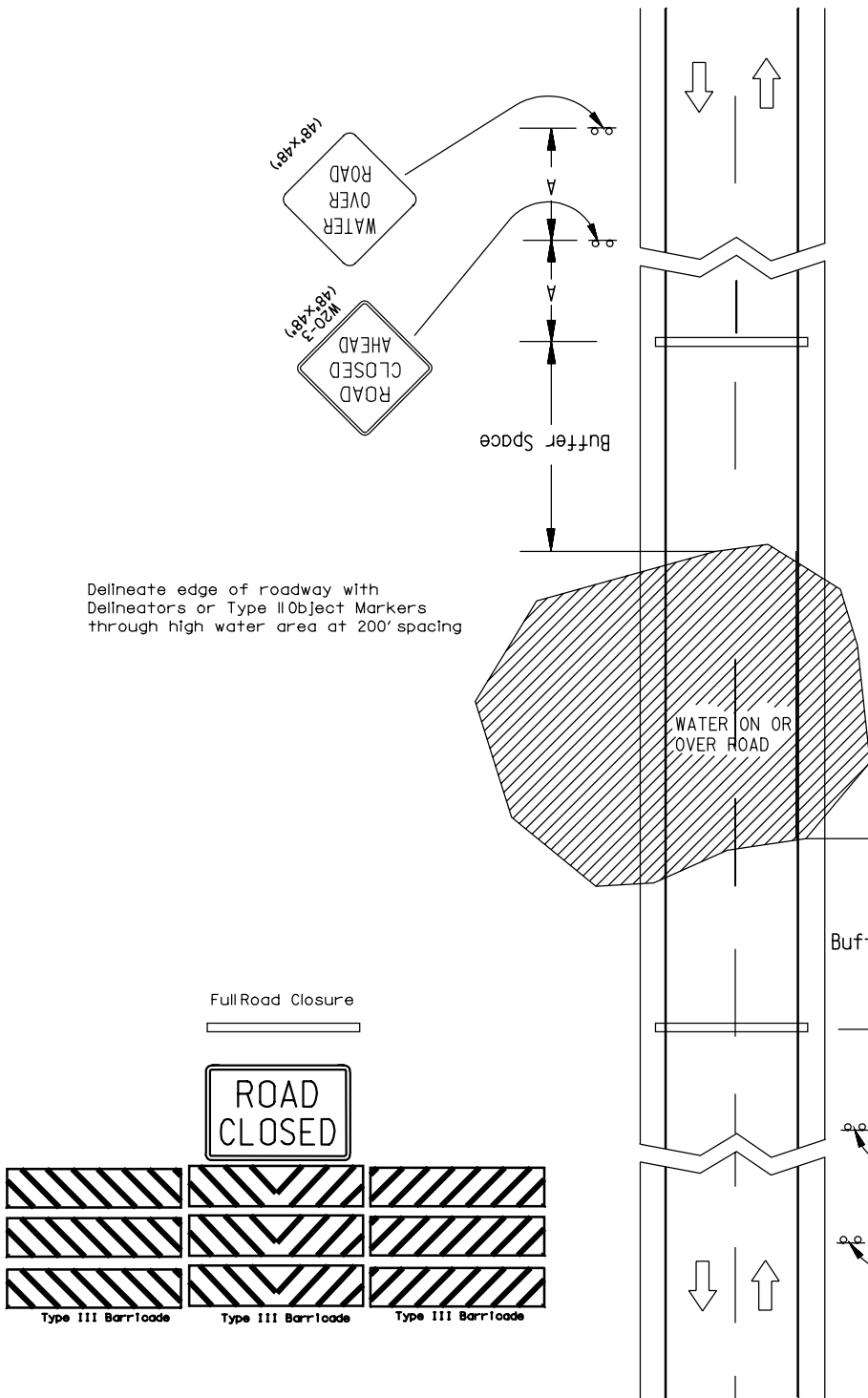
**GUIDES FOR TRAFFIC CONTROL DEVICES  
 WITH STOP CONDITION  
 WATER ON OR OVER ROAD**

Posted Speed Prior to Work (M.P.H.)	Recommended Length of Longitudinal Buffer Space (Feet)
20	35
25	55
30	85
35	120
40	170
45	220
50	280
55	335
60	415
65	485

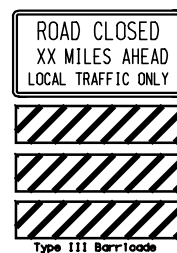
Buffer Space dependant on work site limitations.

Posted Speed Prior to Work (M.P.H.)	Spacing of Advanced Warning Signs (A) (Feet)
0 - 30	100
35 - 40	350
45 - 50	500
55 - 65	750

Delineate edge of roadway with Delineators or Type II Object Markers through high water area at 200' spacing

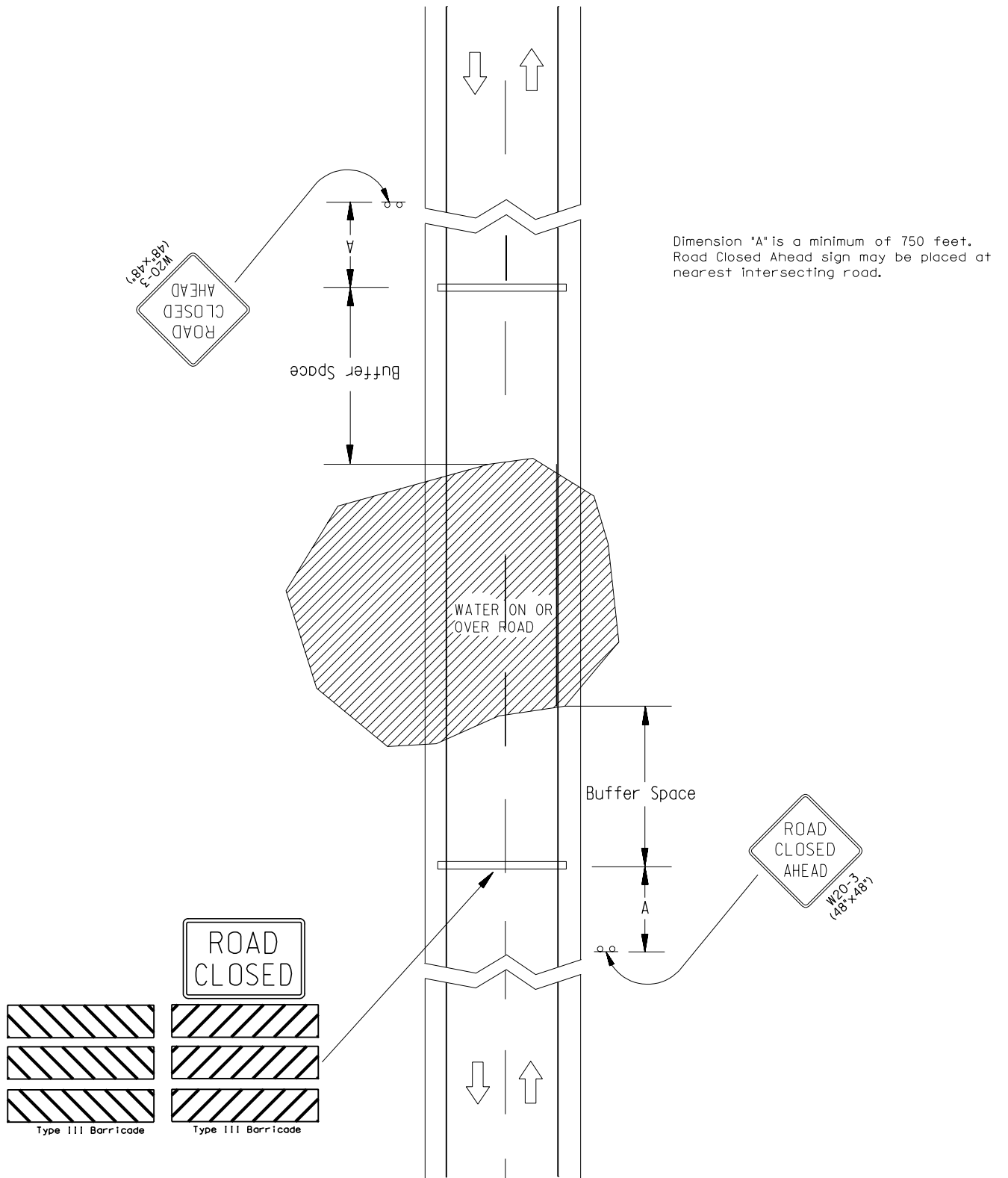


Optional- Install at nearest intersecting road when applicable.



Install on Shoulder of driving lane in direction of travel.

**GUIDES FOR TRAFFIC CONTROL DEVICES**  
**ROAD CLOSED**  
**WATER ON OR OVER ROAD**



**GUIDES FOR TRAFFIC CONTROL DEVICES**  
**ROAD CLOSED**  
**WATER ON OR OVER ROAD**