

# SOUTH DAKOTA OFFICE OF RAILROADS

## APPLICATION FOR OVERHEAD POLE AND WIRE OCCUPANCY

### \$175.00 PROCESSING FEE REQUIRED

**Crossing Fee - located within public right-of-way - \$0.00**

**Crossing Fee - not located within public right-of-way - 1 track - \$75.00/yr.**

**To: Mr. Lynn Kennison, SD Office of Local Transportation, Programs-Railroads, 700 East Broadway Ave.,  
Pierre, SD 57501-2586 - Phone - 605-773-5037**

NEAREST CITY, TOWN OR VILLAGE	NAME AND ADDRESS OF APPLICANT	DATE
NEAREST MILE POST (PLUS FEET FROM MP)		
<input type="checkbox"/> CORPORATION - In What State Incorporated		TELEPHONE NUMBER
<input type="checkbox"/> INDIVIDUAL - Under What Firm Name is Business Conducted		
<input type="checkbox"/> PARTNERSHIP - Give Names of all Partners		

### OVERHEAD POWER CROSSING DATA

NO. OF CIRCUITS	INITIAL:	VOLTAGE	LOAD CURRENT	FREQ
WIRE CLEARANCE OVER RAILS	ANTICIPATED FUTURE:	VOLTAGE	LOAD CURRENT	FREQ
CONDUCTORS:	NO.	MATERIAL		SIZE
STRINGING SAG:	INCHES	TEMPERATURE	FINAL UNLOADED SAG:	INCHES
		TEMPERATURE		TEMPERATURE

### OVERHEAD COMMUNICATION LINE AND CABLE CROSSING DATA

WIRES:	CLEARANCE OVER RAIL	NO. OF WIRES	SIZE		MATERIAL
STRINGING SAG	INCHES	TEMPERATURE	INSULATORS:	TYPE	MATERIAL
CABLE:	SHEATH MATERIAL	NO. OF PAIRS	GAUGE	OUTSIDE DIAMETER	WEIGHT LB/FT.
CABLE SUSPENSION STRAND		SIZE		MATERIAL	
HOW IS CABLE ATTACHED				IF BY RINGS, SPACING	
				INCHES	

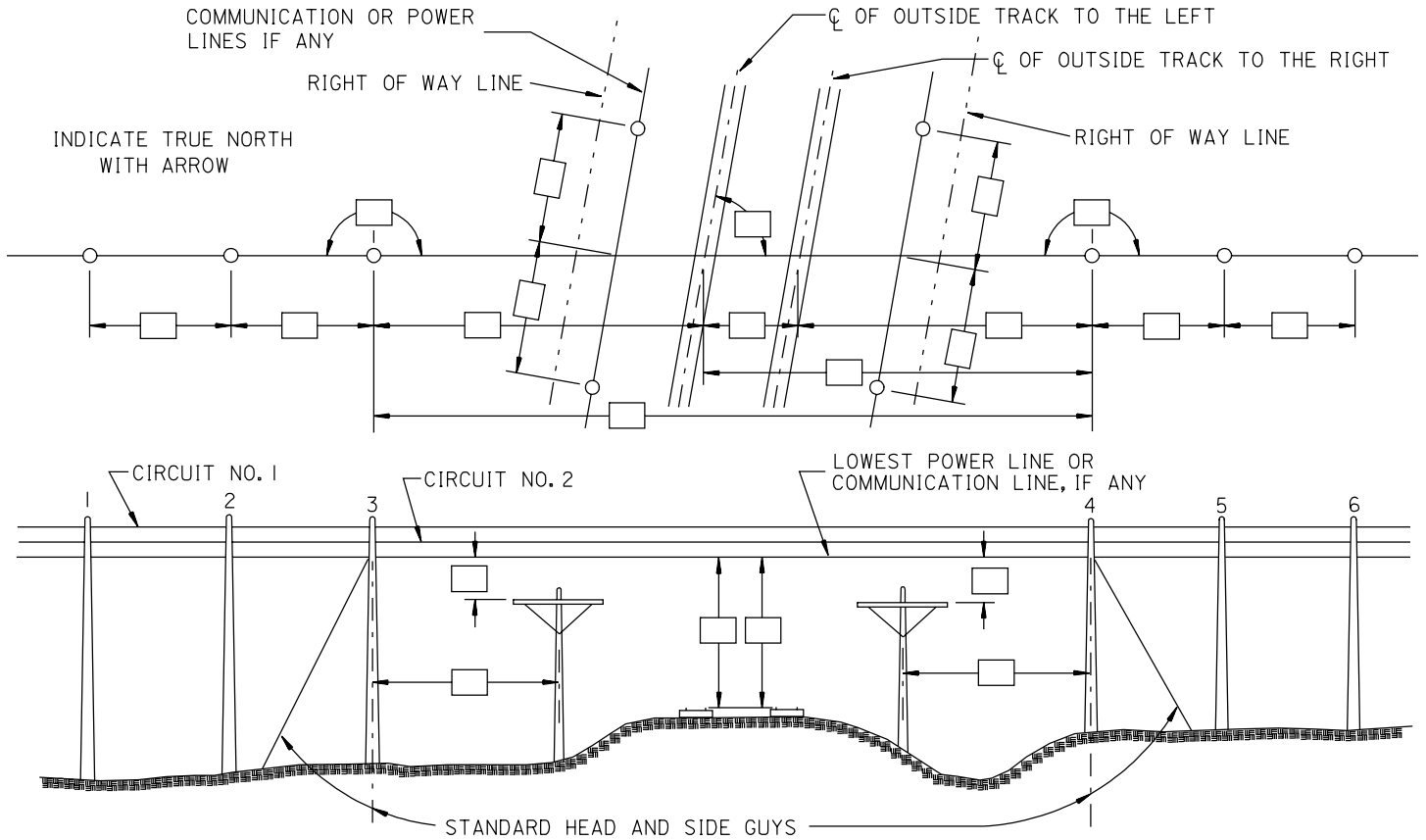
APPLICANT SIGNATURE	BY	TITLE	DATE
---------------------	----	-------	------

REVIEWER'S REMARKS

SD OFFICE OF RAILROADS	DATE
------------------------	------

# REQUIRED DATA FOR WIRE AND CABLE CROSSING

( SPECIAL PLANS REQUIRED FOR LONGITUDINAL OCCUPANCY )



## ELEVATION FOR OVERHEAD CROSSING

### POLE TOP CONSTRUCTION DATA

SIZE OF ARMS	MATERIAL	SIZE AND TYPE OF BRACES
PIN SPACING	SIZE, TYPE AND MATERIAL OF PINS	TYPE OF ARM SEPERATOR
GROUNDING CONNECTION:	MATERIAL	SIZE
AERIAL GROUND WIRE:	MATERIAL	SIZE

POLES	LENGTH (in feet)	CIRCUM. - INCHES		A.S.A. CLASS	DEPTH OF SETTING	NUMBER OF GUYS		
		GROUND	TOP			TOWARD XING	FROM XING	SIZE
NO.1								
NO.2								
NO.3								
NO.4								
NO.5								
NO.6								

TREATMENT OF POLES	SPECIES OF TIMBER	SIZE OF GUY WIRE
MATERIAL OF GUY WIRE		TYPE OF GUY ANCHORAGE