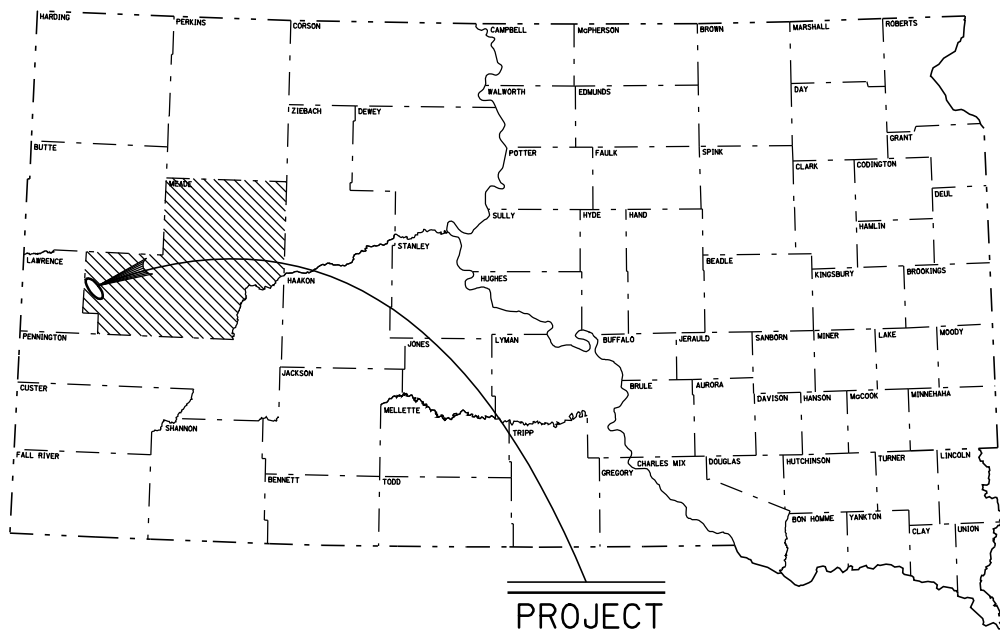


PLOT SCALE - 2640.000053+1.000000

PLOTTED FROM - TRRC11610



STATE OF SOUTH DAKOTA
 DEPARTMENT OF TRANSPORTATION
 PLANS FOR PROPOSED

PROJECT NO. IM 0901(109)28
INTERSTATE 90
MEADE COUNTY

NONREINFORCED PCC PAVEMENT
 GUARDRAIL, DECK OVERLAY, APPROACHES ON 8 STRUCTURES
 & WIDEN WESTBOUND STRUCTURE @ EXIT 30
 PCN 6562

| | | | |
|-----------------------|---------------------------|----------------|---------------------|
| STATE OF SOUTH DAKOTA | PROJECT IM 0901(109)28 | SHEET NO. 1 | TOTAL SHEETS 561 |
|-----------------------|---------------------------|----------------|---------------------|

Plotting Date: 13-FEB-2009
 Revised: 02-11-2009 LLA

INDEX OF SECTIONS

- SECTION A: ESTIMATE OF QUANTITIES
- SECTION B: GRADING PLANS
- SECTION C: TRAFFIC CONTROL PLANS
- SECTION D: EROSION CONTROL
- SECTION E: STRUCTURE PLANS
- SECTION F: SURFACING PLANS
- SECTION M: PAVEMENT MARKING
- SECTION S: PERMANENT SIGNING
- SECTION X: CROSS SECTIONS
- SECTION Z: PIPE SECTIONS



Continuous Concrete Bridge
 Sta. 78+42.76 to Sta. 79+59.76
 117' -0" = 0.022 Mile
 Str. No. 47-015-426

Continuous Concrete Bridge
 Sta. 78+42.56 to Sta. 79+59.56
 117' -0" = 0.022 Mile
 Str. No. 47-015-427

BEGIN IM 0901(109)28
 0+00.00
 MRM EBL = 28.34 +0.078
 MRM WBL = 28.34 +0.000

Equation:
 77+88.04 Ah.=
 77+88.49 Bk.

Continuous Concrete Bridge
 Sta. 100+49.14 to Sta. 102+28.02
 182' -2" = 0.035 Mile
 Str. No. 47-018-428

Continuous Concrete Bridge
 Sta. 100+11.53 to Sta. 101+97.08
 182' -2" = 0.035 Mile
 Str. No. 47-018-430

DESIGN DESIGNATION

| | |
|------------|--------|
| ADT (2006) | 13035 |
| ADT (2026) | 21465 |
| DHV | 2965 |
| D | 50 % |
| T DHV | 8.1 % |
| T ADT | 17.8 % |
| V | 70 mph |

STORM WATER PERMIT

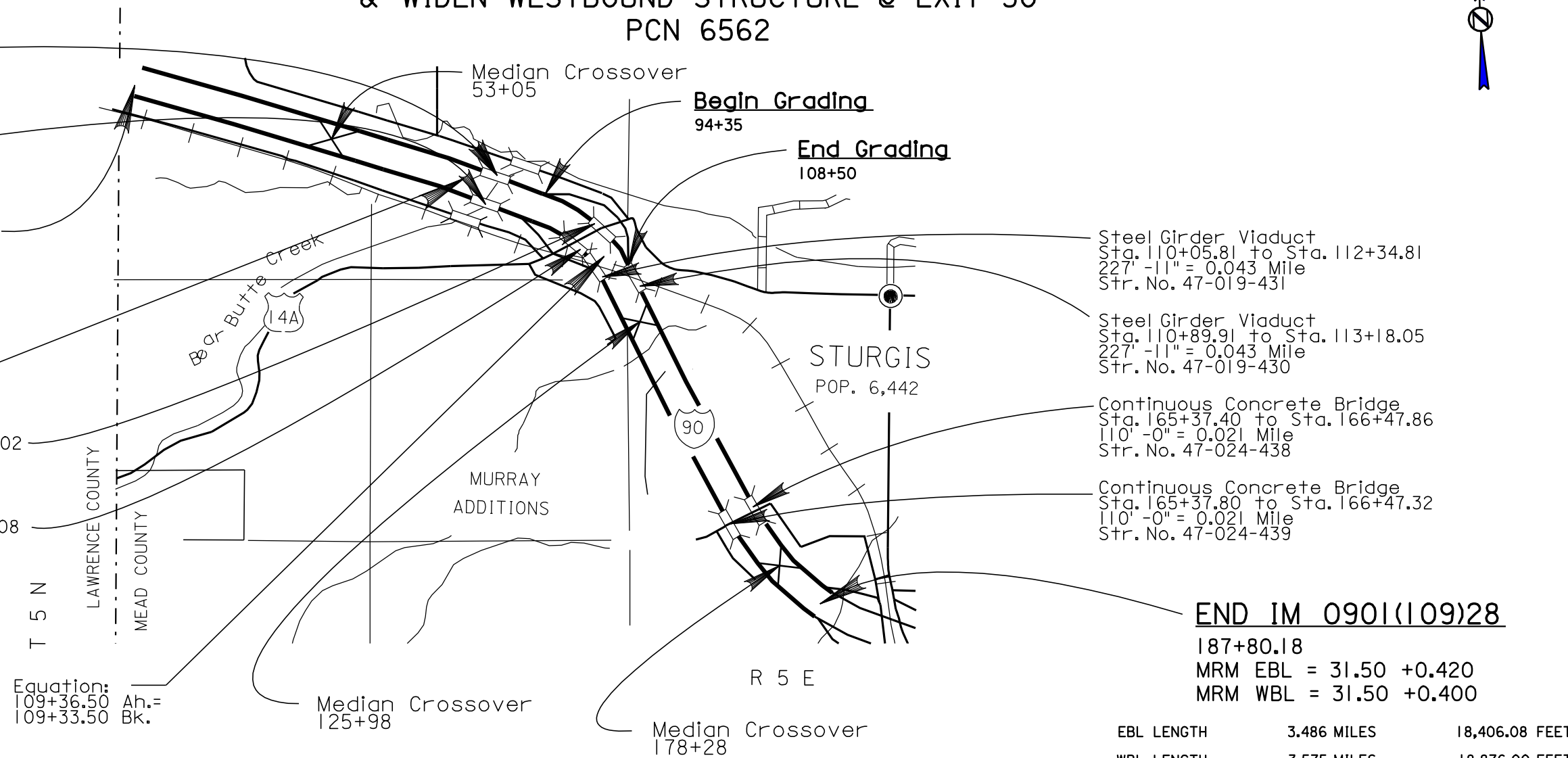
MAJOR STREAM -
 Bear Butte Creek
 AREA DISTURBED - 71 Acres
 PROJECT AREA - 120 Acres

Equation:
 109+36.50 Ah.=
 109+33.50 Bk.

SCALE

LAYOUT, 2 INCH = 1 MILE

Grading Alignment = Westbound Alignment
 Surfacing Alignment = Median Centerline Alignment
 Structures on Median Centerline Alignment



Steel Girder Viaduct
 Sta. 110+05.81 to Sta. 112+34.81
 227' -11" = 0.043 Mile
 Str. No. 47-019-431

Steel Girder Viaduct
 Sta. 110+89.91 to Sta. 113+18.05
 227' -11" = 0.043 Mile
 Str. No. 47-019-430

Continuous Concrete Bridge
 Sta. 165+37.40 to Sta. 166+47.86
 110' -0" = 0.021 Mile
 Str. No. 47-024-438

Continuous Concrete Bridge
 Sta. 165+37.80 to Sta. 166+47.32
 110' -0" = 0.021 Mile
 Str. No. 47-024-439

END IM 0901(109)28

187+80.18
 MRM EBL = 31.50 +0.420
 MRM WBL = 31.50 +0.400

| | | |
|----------------------|-------------|----------------|
| EBL LENGTH | 3.486 MILES | 18,406.08 FEET |
| WBL LENGTH | 3.575 MILES | 18,876.00 FEET |
| GROSS LENGTH | 7.061 MILES | 37,282.08 FEET |
| LENGTH OF EXCEPTIONS | 0.318 MILES | 1,677.18 FEET |
| NET LENGTH | 6.743 MILES | 35,604.90 FEET |

PLOT NAME - 01
 FILE - U:\MS\PR\MEAD6562\6562.TITLE.DGN