

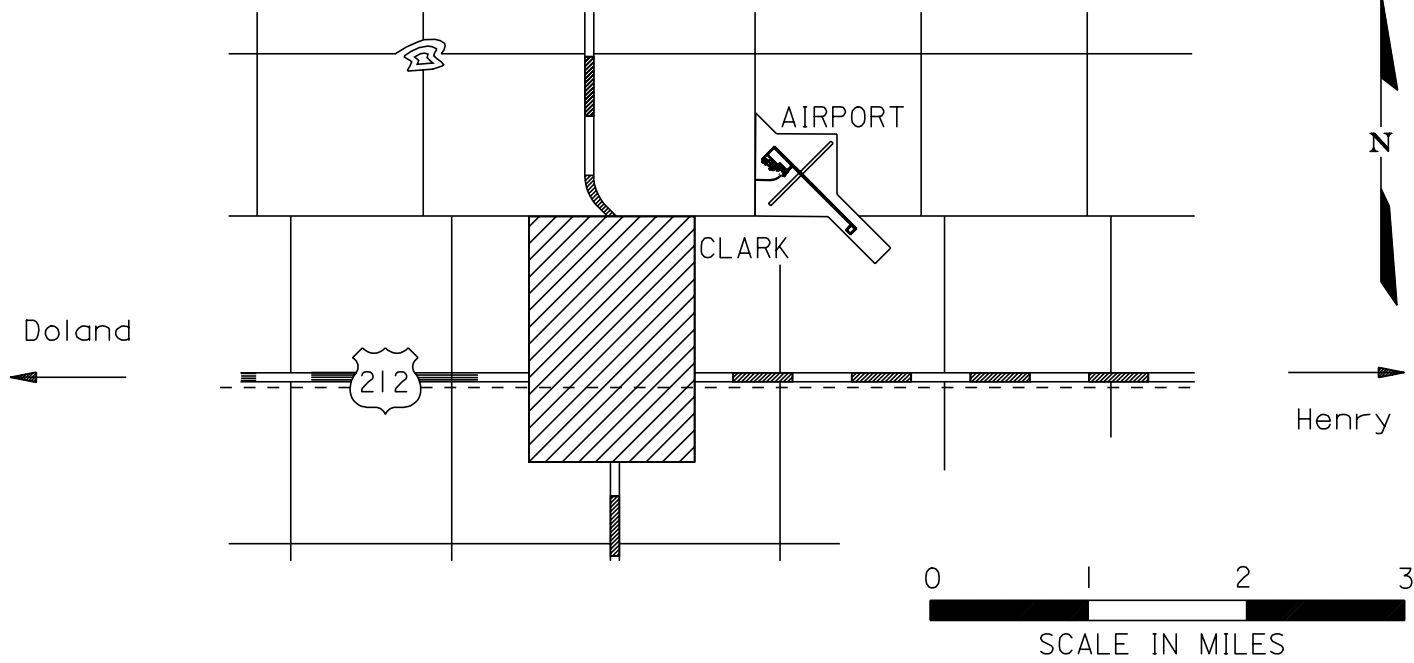


CLARK

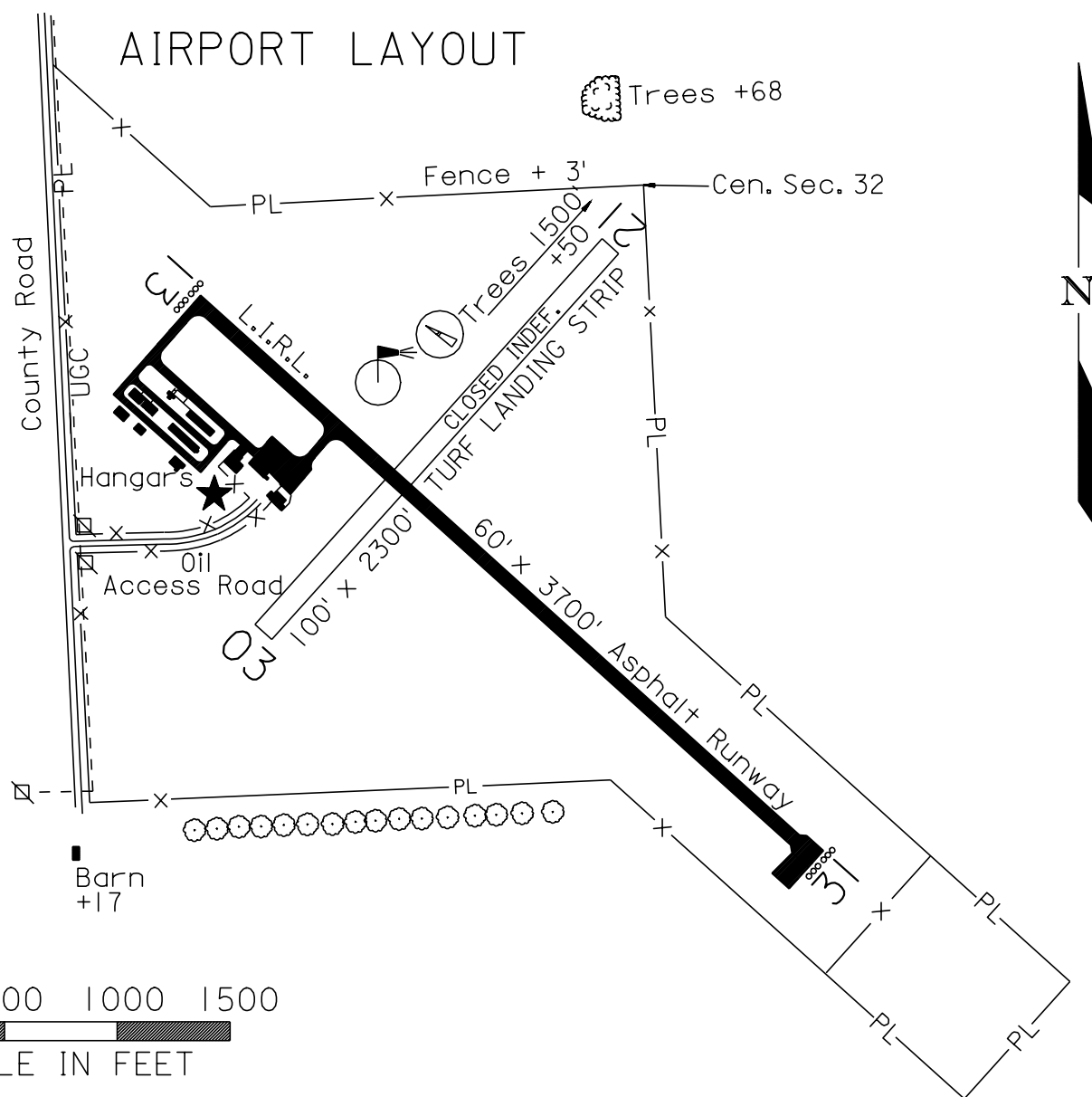
Airport Ident 8D7  
CLARK COUNTY

### AIRPORT LOCATION

LAT. 44°53'44"  
LONG. 97°42'43"



### AIRPORT LAYOUT



### AIRPORT ELEVATION 1793'

<p><b>RUNWAY SURFACE:</b> 13 / 31 Asphalt 3 / 21 Turf - Closed Indef.</p> <p><b>LIGHTED:</b> 13 / 31 and Beacon</p> <p><b>FUEL:</b> 100 OCTANE CALL DOUG @ (605) 233-0307</p> <p><b>REPAIRS:</b> None</p> <p><b>TRANSPORTATION:</b> None</p> <p><b>MEALS:</b> In Town</p> <p><b>MANAGER:</b> Doug Hansen Phone 233-0307</p> <p><b>OWNER:</b> Clark County</p>	<p><b>RADIO:</b> Unicom 122.8</p> <p><b>NAV. AIDS:</b> None</p> <p><b>FSS:</b> 1-800-992-7433</p> <p><b>WEATHER:</b> FSS</p> <p><b>REMARKS:</b> Unattended Pay telephone available</p>
---	--