

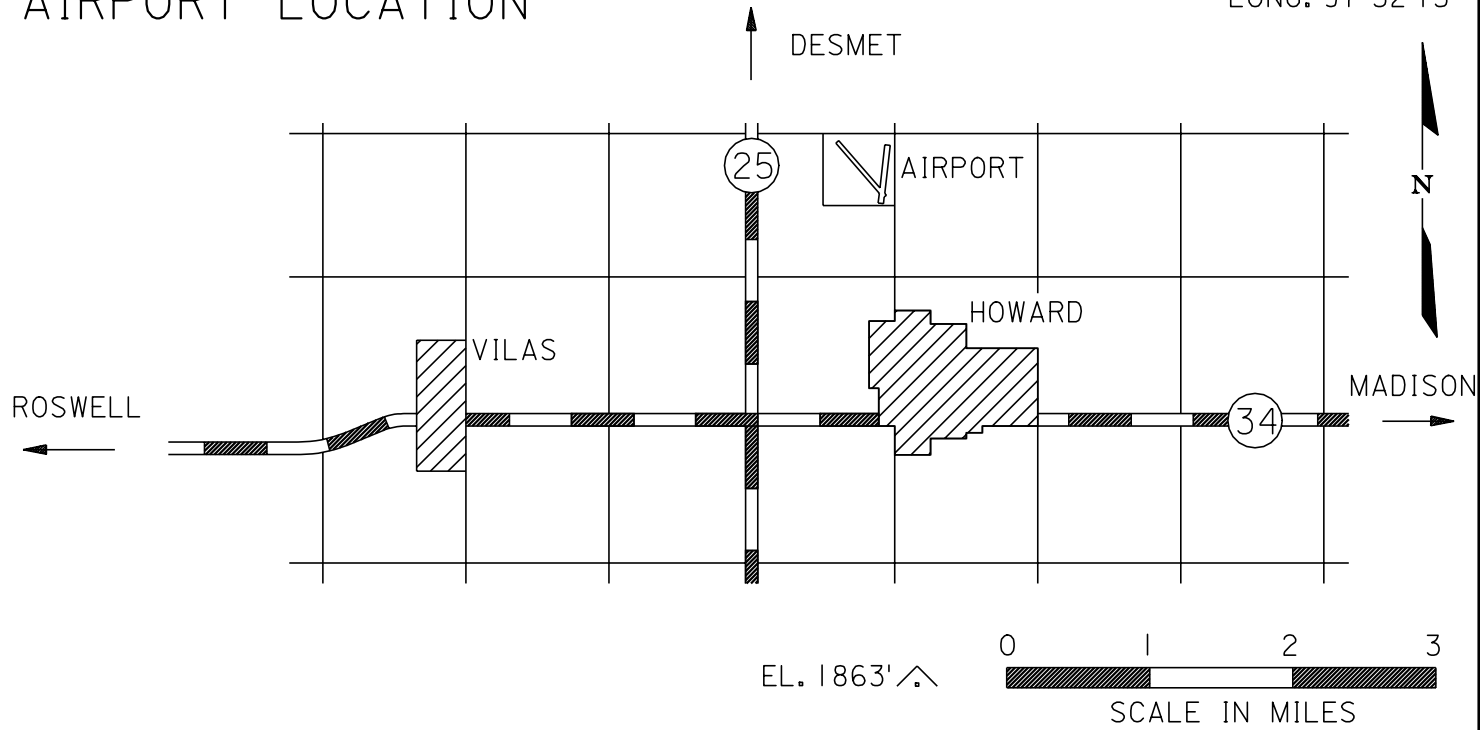


Airport Ident 8D9
HOWARD

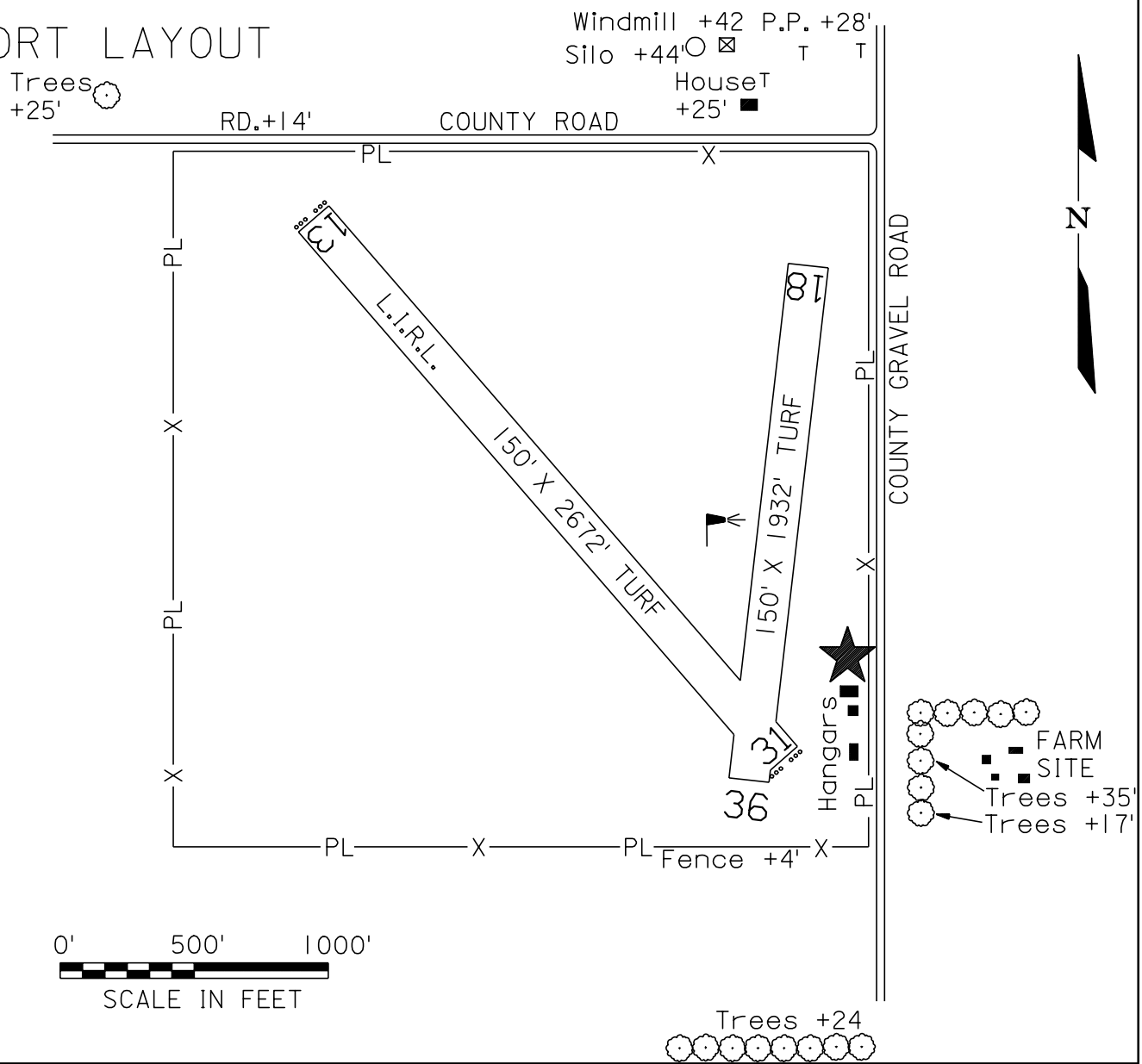
HOWARD

AIRPORT LOCATION

LAT. 44°01'45"
LONG. 97°32'15"



AIRPORT LAYOUT



AIRPORT ELEVATION 1582'

<p>RUNWAY SURFACE: 13 / 31 Turf 18 / 36 Turf</p> <p>LIGHTED: 13 / 31 and Beacon</p> <p>FUEL: None</p> <p>REPAIRS: None</p> <p>TRANSPORTATION: None</p> <p>MEALS: In Town</p> <p>MANAGER: Tim Clarke (605) 940-9217</p> <p>OWNER: City of Howard</p>	<p>RADIO: None, CTAF 122.9</p> <p>NAV. AIDS: Mike-A-Lite Key Mike 3 Times 122.9 for Runway Lights</p> <p>FSS: 1-800-992-7433</p> <p>WEATHER: FSS</p> <p>REMARKS: Unattended; Approved under previous standards (-300' Length) Lights are Dusk to Dawn</p>
---	--