

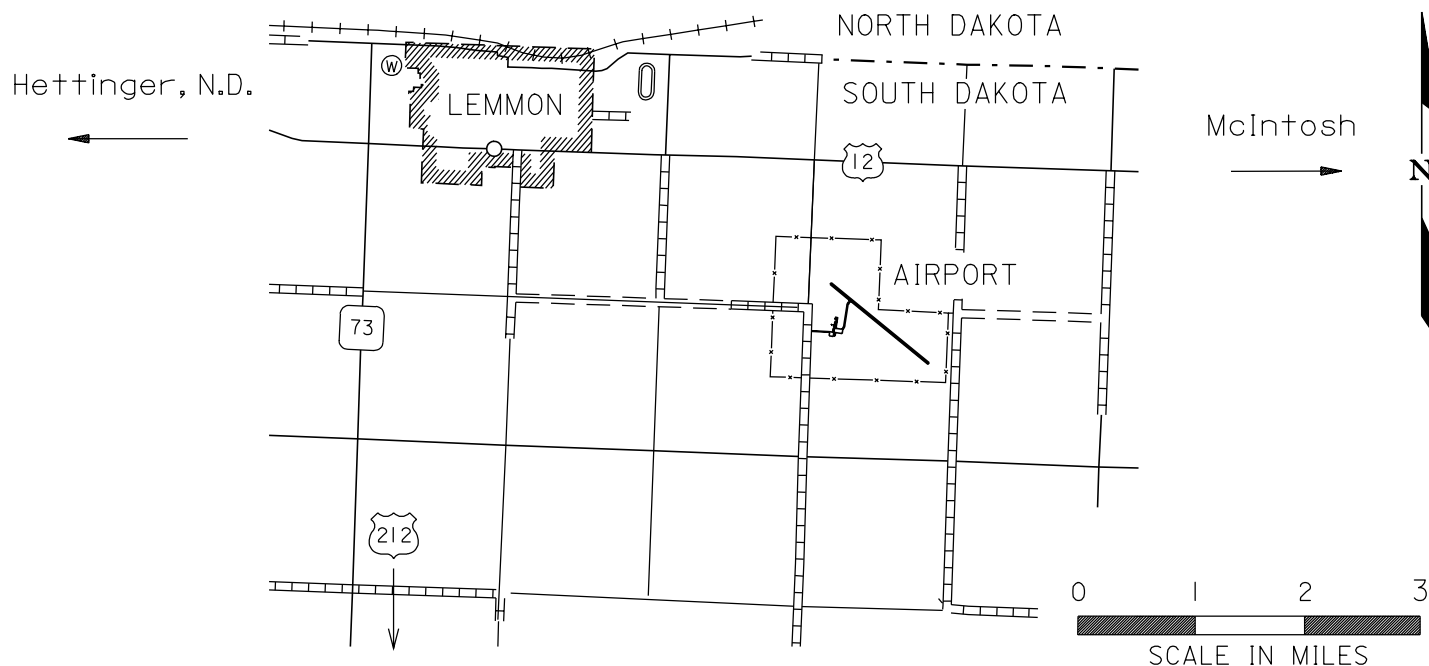


Airport Ident LEM
LEMMON

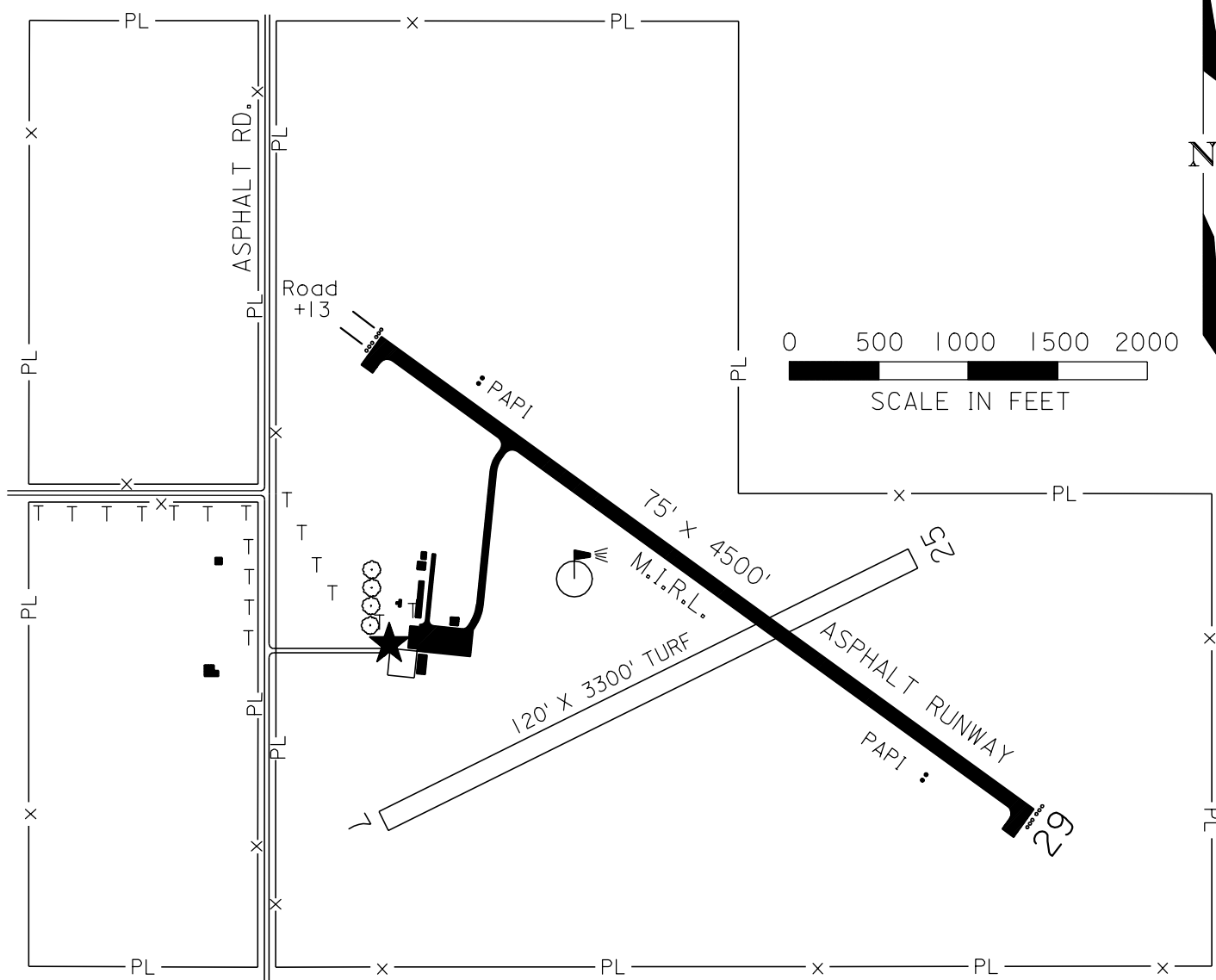
LEMMON

AIRPORT LOCATION

LAT. 45°55'40"
LONG. 102°06'15"



AIRPORT LAYOUT



AIRPORT ELEVATION 2572'

RUNWAY SURFACE: 11 / 29 Asphalt
7 / 25 Turf

LIGHTED: 11 / 29 and Beacon

FUEL: 100 LL

REPAIRS: Minor

TRANSPORTATION: Courtesy Car
available 8 - 5

MEALS: In Town; vending at airport

MANAGER: Mike Ginther
H-(701) 376-3259 W-(605) 374-5281
cell (605) 848-0577

OWNER: City of Lemmon

RADIO: Unicom 122.8

NAV. AIDS: PAPI's Runway 11 / 29
For Rwy Lights
Key Mike 5 Times on 122.8
VOR - Out of Service
GPS RWY 29

FSS: 1-800-992-7433
Zenith Number 2589

WEATHER: AWOS-AV 122.8 (617) 262-3825
FSS

REMARKS:

Attended daylight hours, Tele. Available
After Hours (701) 376-3259

LEMMON

Revised:10/09