

CITY MAP

BANCROFT

KINGSBURY COUNTY - SOUTH DAKOTA

T 112 N - R 58 W

SCALE

0 300ft.

POP. 37 (2000)

2007

PREPARED BY

SOUTH DAKOTA

DEPARTMENT OF TRANSPORTATION

IN COOPERATION WITH

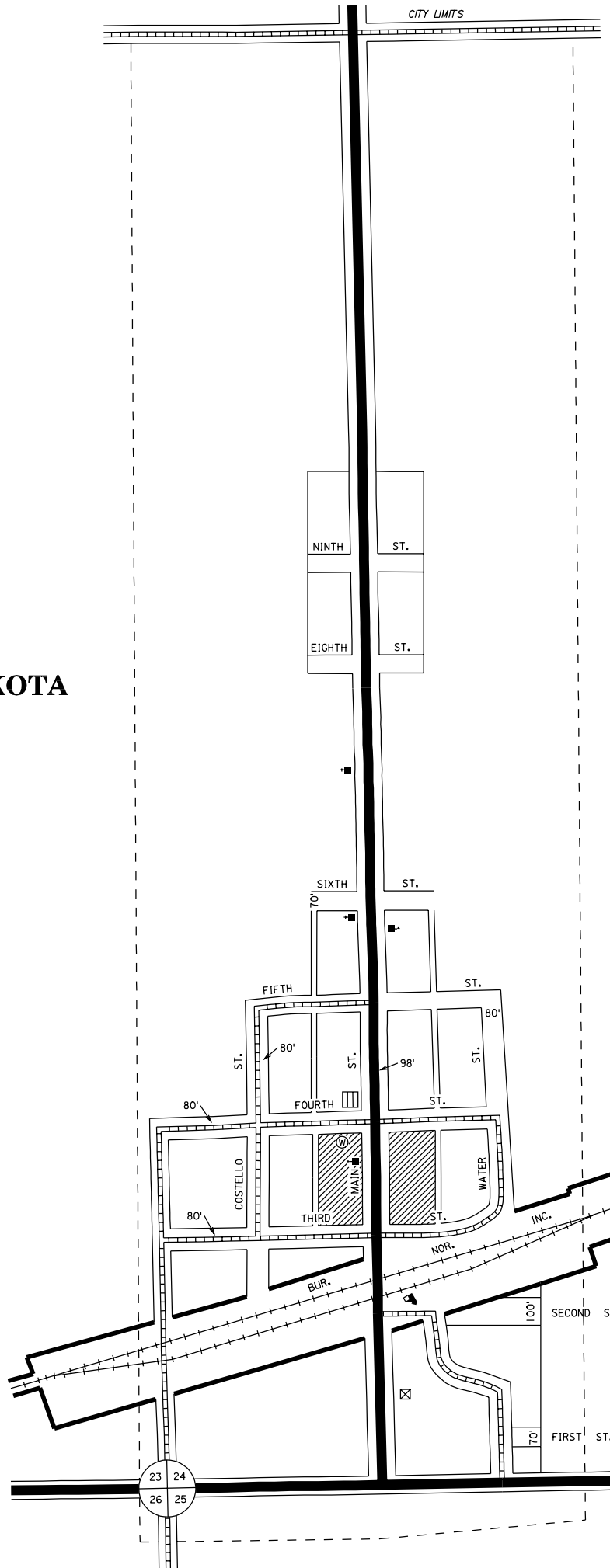
**U.S. DEPARTMENT OF TRANSPORTATION
FEDERAL HIGHWAY ADMINISTRATION**

ALL STREET RIGHT OF WAY 66 FT.

ALLEYS 20 FT.

(UNLESS OTHERWISE INDICATED)

(UNOFFICIAL EDITION)



LEGEND

U.S. NUMBERED HIGHWAY	---	18
U.S. NUMBERED INTERSTATE HIGHWAY	---	90
STATE NUMBERED HIGHWAY	---	45
STREAMS, CREEKS, AND OTHER WATERWAYS	---	
CANALS, LATERALS, IRRIGATION DITCHES WITH DIRECTION OF FLOW	---	
HARD SURFACE	---	
GRAVEL SURFACE	---	
EARTH SURFACE	---	
UNIMPROVED	---	
TRAIL	---	
GRADE	---	
CENTRAL BUSINESS DISTRICT	---	
TOWN CENTER (COUNTY SEAT)	---	
CITY LIMITS	---	
RAILROAD	---	
GRAIN ELEVATOR	---	
SWIMMING POOL	---	
BALL FIELD	---	
CEMETERY	---	
HOSPITAL	---	
HIGHWAY GARAGE (C-COUNTY, S-STATE)	---	
POST OFFICE	---	
CHURCH	---	
LIBRARY	---	
POWER PLANT	---	
WATER SUPPLY STAND PIPE OR TANK	---	
MUNICIPAL BUILDING	---	
BULK PLANT	---	
FIREHALL	---	
SCHOOLHOUSE	---	
TOWNHALL	---	
MUSEUM	---	
POLICE STATION	---	
AIRPORT	---	

RESTRICTION OF LIABILITY: The SD-DOT make no claims, promises or guarantees about the accuracy, completeness, or adequacy of the data and expressly disclaims liability of errors and omissions of the data content. No warranty of any kind, implied, expressed or statutory, including but not limited to the warranties of non-infringement of third party rights, title, merchantability and fitness for a particular purpose is given with respect to this data.