

CITY MAP CAMP CROOK

HARDING COUNTY - SOUTH DAKOTA

T 18 N - R 1 E

SCALE



POP. 56 (2000)

2007

PREPARED BY

**SOUTH DAKOTA
DEPARTMENT OF TRANSPORTATION**

IN COOPERATION WITH

**U.S. DEPARTMENT OF TRANSPORTATION
FEDERAL HIGHWAY ADMINISTRATION**

ALL STREET RIGHT OF WAY 66 FT.

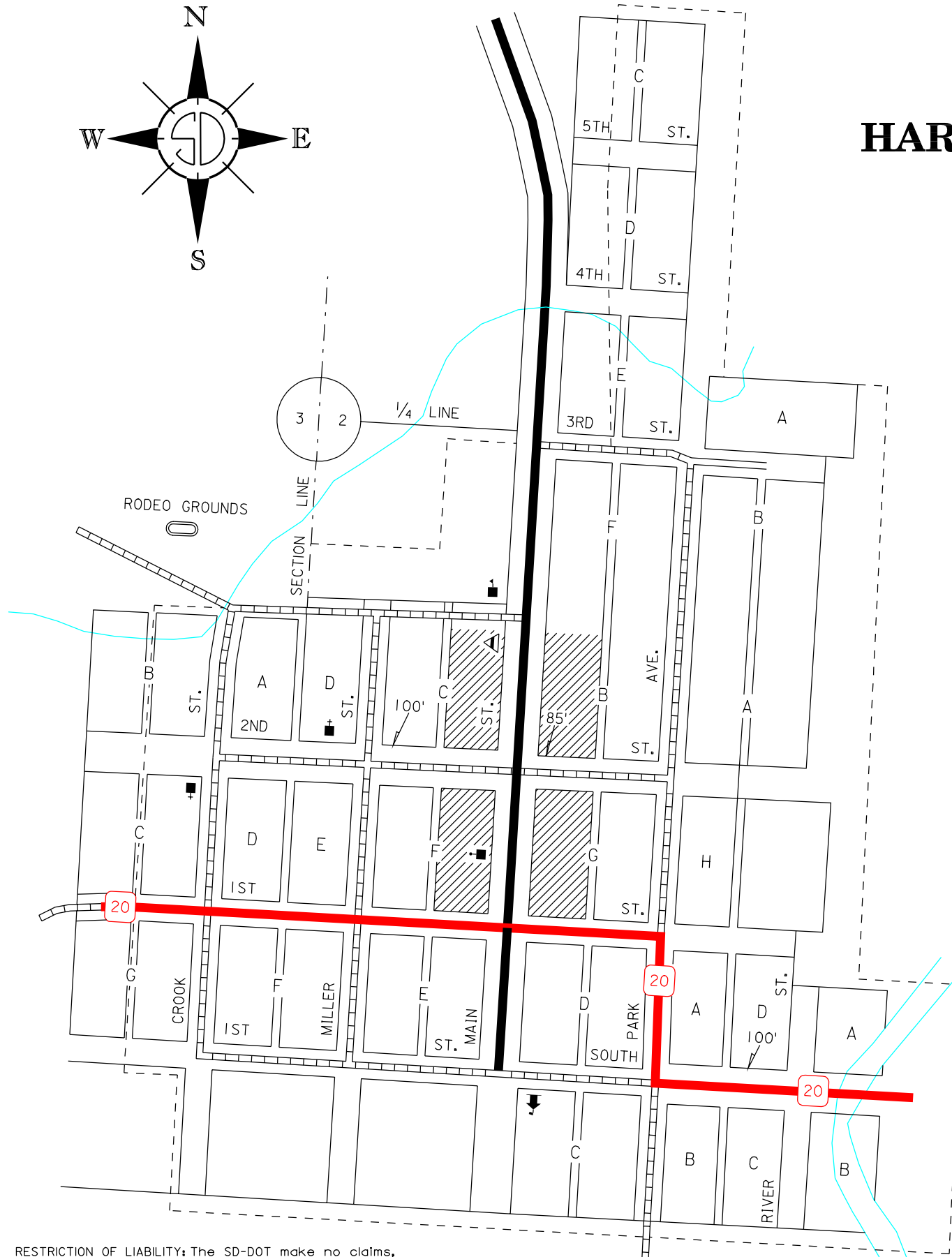
ALLEYS 20 FT.

(UNLESS OTHERWISE INDICATED)

(UNOFFICIAL EDITION)

LEGEND

U.S. NUMBERED HIGHWAY	---	
U.S. NUMBERED INTERSTATE HIGHWAY	---	
STATE NUMBERED HIGHWAY	---	
STREAMS, CREEKS, AND OTHER WATERWAYS	---	
HARD SURFACE	---	
GRAVEL SURFACE	---	
EARTH SURFACE UNIMPROVED	---	
TRAIL	---	
GRADE	---	
CENTRAL BUSINESS DISTRICT	---	
TOWN CENTER	---	
CITY LIMITS	---	
RAILROAD	---	
BALL FIELD	---	
POST OFFICE	---	
CHURCH	---	
SCHOOLHOUSE	---	
FOREST RANGER STATION	---	



RESTRICTION OF LIABILITY: The SD-DOT make no claims, promises or guarantees about the accuracy, completeness, or adequacy of the data and expressly disclaims liability of errors and omissions of the data content. No warranty of any kind, implied, expressed or statutory, including but not limited to the warranties of non-infringement of third party rights, title, merchantability and fitness for a particular purpose is given with respect to this data.

